

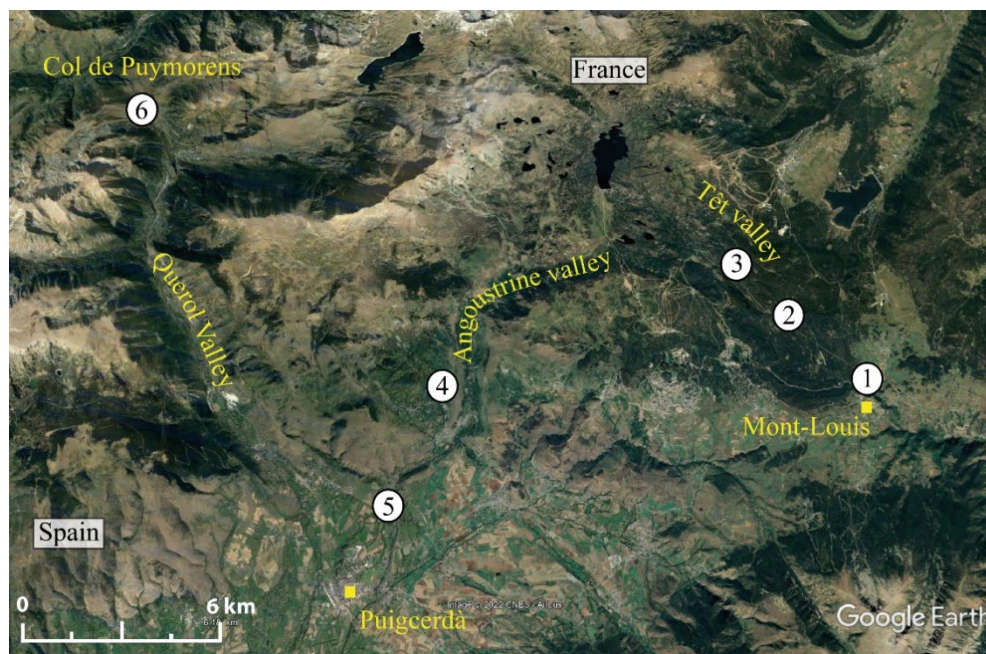
## Field trip to Têt - Angoustrine – Querol - Col de Puymorens

Magali Delmas<sup>1</sup>, Théo Reixach<sup>1</sup>, Régis Braucher<sup>2</sup>, Marc Oliva<sup>3</sup>, Yanni Gunnell<sup>4</sup>, Marc Calvet<sup>1</sup>  
 (1)Université de Perpignan Via Domitia, (2)Aix-Marseille Université, (3)Universitat de Barcelona, (4)Université de Lyon

**Maximum:** 60 participants

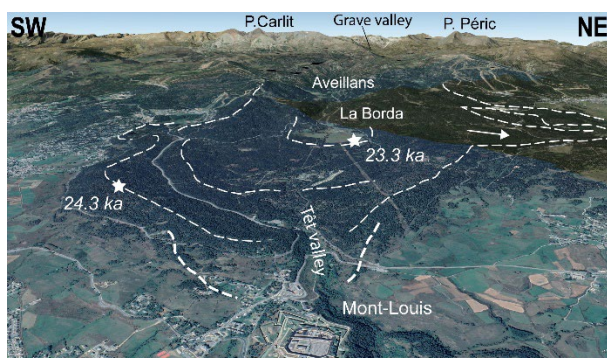
**Time start-end:** 8-19 h

**Topics:** Chronology for Pleistocene glaciations and post-LGM deglaciation, implications for Late Pleistocene climate changes and for glacial erosion rates.

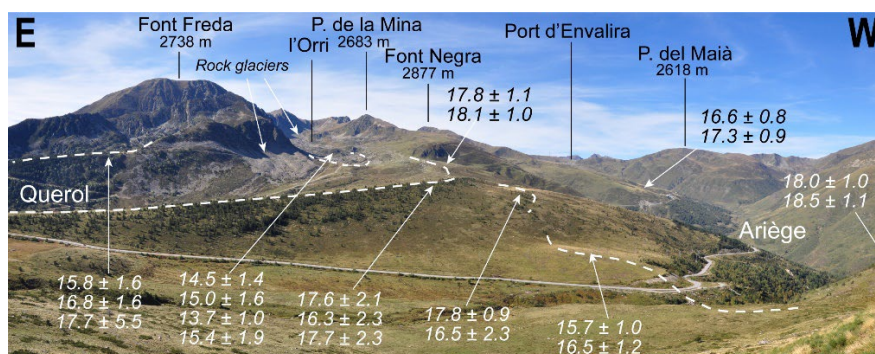


### Stops

- 1- Mont-Louis and the Late Pleistocene terminal moraines of the Têt valley.** Chronology of the local Last Glacial Maximum in the Eastern Pyrenees. Relative stratigraphy and surface exposure ages on the glacial sequence of deposits.
- 2- La Borde.** Extent and chronology of the first stages of the post-LGM deglaciation in the Têt valley. Data on ELA fluctuations during the Late Pleistocene glaciation and the Last Glacial to Interglacial Termination in the Têt valley.
- 3- Aveillans.** Inherited exposure ages on bedrock steps and implications for Late Pleistocene glacial erosion rate.
- 4- Angoustrine and the Middle to Late Pleistocene glacial deposits in the Cerdagne basin.** Section on a weathered lateral moraine ascribed to a Middle Pleistocene glaciation. Picnic with a panoramic view on the Cerdagne basin.
- 5- Middle and Late Pleistocene glacial and glaciofluvial outwash system of the Querol valley.** Extent and chronology of three generations of ice-margin deposits based on surface exposure ages, vertical <sup>10</sup>Be profiles and burial datings.
- 6- Col de Puymorens.** Chronology of the post-LGM deglaciation in Querol and Ariège upper valleys. Paleoclimatic reconstruction based on paleoglacilogic modelling and implication for atmospheric circulation pattern at large scale. First data on permafrost monitoring on the Front Freda massif.



The Late Pleistocene terminal moraines of the Têt valley



The Late Glacial sequence of deposits around the col de Puymorens